



# TWO POST LIFT - SPO55

THE NEW SPO55 IS ESPECIALLY SUITABLE FOR LIGHT-DUTY COMMERCIAL VEHICLES – ESPECIALLY FOR VEHICLES WITH A LONG WHEELBASE

Non load bearing cables ensure even lifting and lowering.

Each lifting column features a maintenance-free high pressure cylinder.

The mechanical safety latch integrated on both columns locks the lift carriage in position and thus ensures maximum safety.

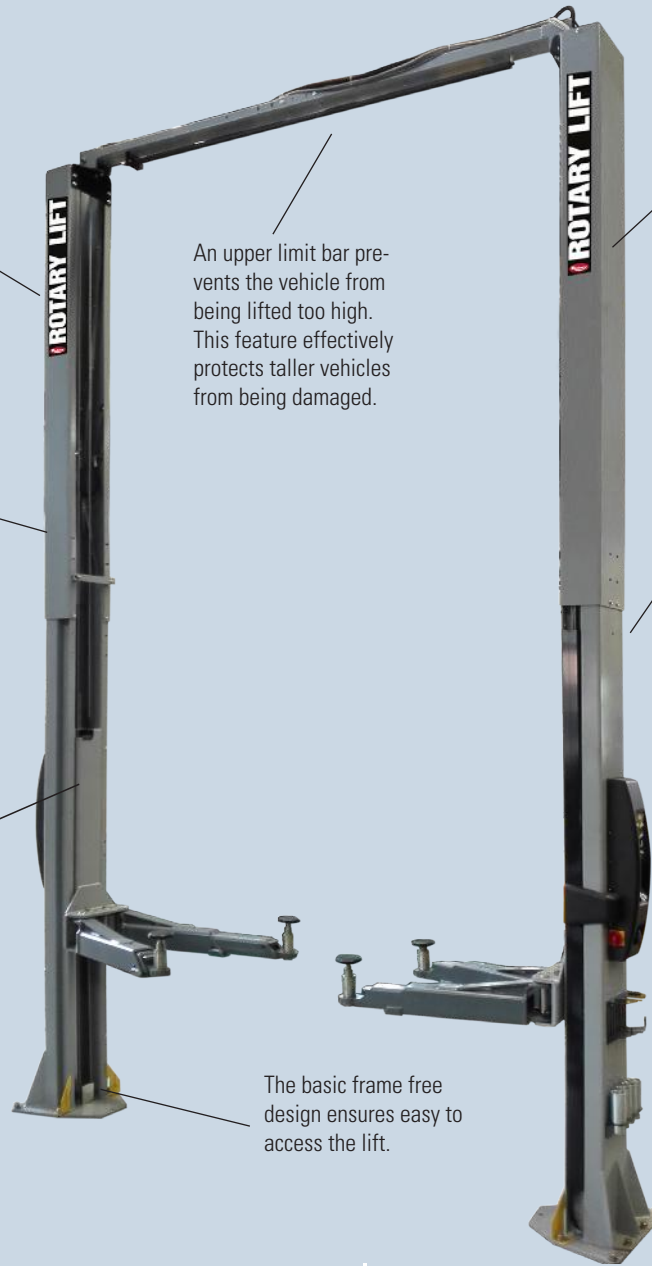
An upper limit bar prevents the vehicle from being lifted too high. This feature effectively protects taller vehicles from being damaged.

The basic frame free design ensures easy to access the lift.

The energy-efficient electro-hydraulic design provides for low noise and economic work.

The double S-profile of the lifting columns provide for utmost stability at minimum space requirements. In addition, the contact surface area of the carriage slider bearings is considerably increased, which protects the column from premature wear.

For increased ergonomics and productivity, all E-models have been equipped with a second control unit. Because of the workshop environment, the pushbuttons can also be pressed when wearing gloves.



## DETAILS

The lift carriage bearings are made of self-lubricating and absolutely maintenance-free Tivar® 1000 polyethylene. Two characteristics that help reduce operating expenses considerably.

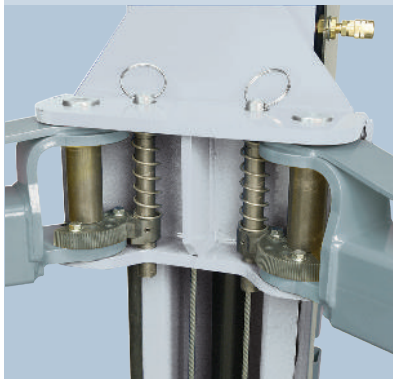
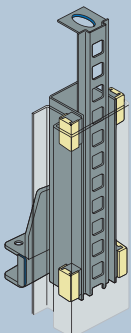
The supporting arms are automatically locked in position during the lifting operation. Once the lift has been completely lowered, this interlock is automatically released. The very narrow spacing between the locking positions and a manual unlocking function enhance the ease of use.

### Electrical control

- Single-hand operating unit on both lifting columns.
- Electrically controlled safety latches
- Sensitive pushbuttons.
- Integrated 220 V connection, prepared for connecting compressed air.

### Manual control

- Conventional operation using two hands
- Manual lock release.



Supporting arms	Symmetric	Symmetric
Model	SPO55M	SPO55E
Capacity	5500 kg	5500 kg
A. Stroke	1803 mm	1803 mm
B. Overall height		
EH0	4165 mm	4165 mm
EH1	4470 mm	4470 mm
EH2	4775 mm	4775 mm
EH3	5080 mm	5080 mm
EH4	5415 mm	5415 mm
C. Overall width (Outside of base plate)	3496 mm	3496 mm
D. Drive through clearance	2602 mm	2602 mm
Switchoff level		
EH0	4026 mm	4026 mm
EH1	4331 mm	4331 mm
EH2	4636 mm	4636 mm
EH3	4941 mm	4941 mm
EH4	5266 mm	5266 mm
F. Supporting arm length front min.		
Without extension arm	790 mm	790 mm
With extension arm	1040 mm	1040 mm
G. Supporting arm length front max.		
Without extension arm	1700 mm	1700 mm
With extension arm	1950 mm	1950 mm
H. Supporting arm length rear min.		
Without extension arm	790 mm	790 mm
With extension arm	1040 mm	1040 mm
I. Supporting arm length rear max.		
Without extension arm	1700 mm	1700 mm
With extension arm	1950 mm	1950 mm
J. Rotary plate height min.	119 mm	119 mm
K. Rotary plate height max.	181 mm	181 mm
M. Clear size column spacing	2875 mm	2875 mm
Motor performance	3 kW	3 kW
Electrical connection	230/400 V, 50 Hz	230/400 V, 50 Hz
Lifting time	60 sec.	60 sec.
Required ceiling height		
EH0	4230 mm	4230 mm
EH1	4530 mm	4530 mm
EH2	4840 mm	4840 mm
EH3	5145 mm	5145 mm
EH4	5470 mm	5470 mm

\*Capacity: 5000 kg with extension arm.  
5500 kg without extension arm.

\*M Manual lock release  
E Electrical control



**EQUIPMASTERS**  
corporation

B-211 , Arjun Centre ,  
Govandi Station Road , Govandi,  
Mumbai - 400088 , Maharashtra.  
Tel : +91-22-25503037 / 08 Extn 22  
E Mail : info@dentmastersindia.com  
Website : www.dentmastersindia.com

## ACCESSORIES

Rotary adaptor extension kit for passenger cars (4 x 89 mm, 4 x 127 mm),  
Item No. FJ7880BBK



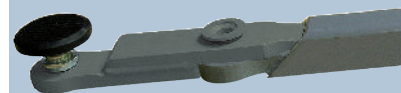
Rotary adaptor extension kit for delivery trucks/vans (4 x 200 mm),  
Item No. FJ6172Y



Support kit for Sprinter/Crafter (2 pieces) behind,  
Item No. FJ6215MB



Supporting arm extension 250mm,  
Item No. AE-250



Support kit for Sprinter/Crafter (2 pieces) front,  
Item No. FJ6216



Support kit for delivery trucks/vans (4 x U-support),  
Item No. FJ6173Y

